

HAFCO METALMASTER PD-510



Belt Drive - Pedestal Drill

32mm Drill Capacity



**NEW MODEL
Alternative to
(D152)**

HAFCO METALMASTER PD-510 Belt Drive - Pedestal Drill



Left View



Magnetic Switch



Emergency Stop Switch and Light Switch



Work Light



Adjustable Safety Chuck Guard with Flip Up Screen



Safety Chuck Guard Flipped Up



1 Piece Cast Iron Drilling Lever



Safety Micro Switch on Pulley Guard



Head Side View



A Section Belt Drive System



Chuck Key Holder



Belt Tension Lever and Lock

Speed Chart

Speed Chart (RPM) and Recommendations						
Imp.	Metric	S/Wood	H/Wood	Brass	Alum	Steel
1/16-3/16	1.5-4.8	3000	3000	3000	3000	3000
1/4-3/8	6.0-10.0	2000	1500	1200	2500	1000
7/16-5/8	11.0-16.0	1500	750	750	1500	600
11/16-1	22.0-25.0	750	500	400	1000	350
1.1/8-1.1/4	28.5-32.0	750	250	400	700	250

Recommended Speed for Drill Size and Material



Tilting and Rotating Cast Iron Table

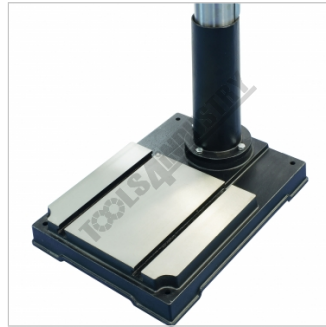


Work Table

HAFCO METALMASTER PD-510 Belt Drive - Pedestal Drill



Table-Height-Adjustment-Crank



Base



Drill Drift

Features

- Ideal for home, workshop or farm use
- Quiet V-belt drive system
- Quick action belt tensioning lever
- Drill chuck key holder mounted on right side of the machine
- Adjustable safety drilling chuck guard with flip up screen
- One piece cast iron drilling lever with comfort grips
- Safety magnetic-type switch
- Safety micro switch on pulley guard
- Rack & pinion table height adjustment with locking lever
- Thick walled column ensuring greater rigidity
- Table tilts left & right to 45°
- Drilling depth stop
- Work light mounted underneath drill head to provide direct light onto the work piece
- T slotted work table
- 12 Spindle speeds - 150, 240, 270, 330, 430, 470, 830, 1030, 1270, 1430, 1790, 2450rpm
- Fan-cooled, copper wound 240V motor

Includes

- 16mm keyed drill chuck and arbor
- Chuck key to suit
- Drill drift tool to remove drill chuck or taper shank drills

Specifications

ORDER CODE	D600
Model	PD-510
Bench / Pedestal Type	Pedestal
Duty Type	Heavy-Duty
Drill Capacity	32mm
Spindle Taper	4MT
Spindle Travel	120mm
Throat Depth	255mm
Quill Diameter	62mm



SHAW MACHINERY
12 FILMER STREET
CLONTARF, QLD 4019
PH: 0738832731

HAFCO METALMASTER PD-510 Belt Drive - Pedestal Drill

Collar Diameter	75mm
Column Diameter	92mm
Spindle To Table	745mm
Spindle To Base	1205mm
Table Shape	Rectangle
Table Size	470 x 415mm
Work Light	Yes
Micro Switch On Pulley Guard	Yes
Drive Belt Type	A Section
Spindle Speed Steps	12
Spindle Speed Range	150-2450rpm
Motor Power	2hp
Motor Voltage	240V
Overall Height	1710mm
Weight (Nett)	130kg